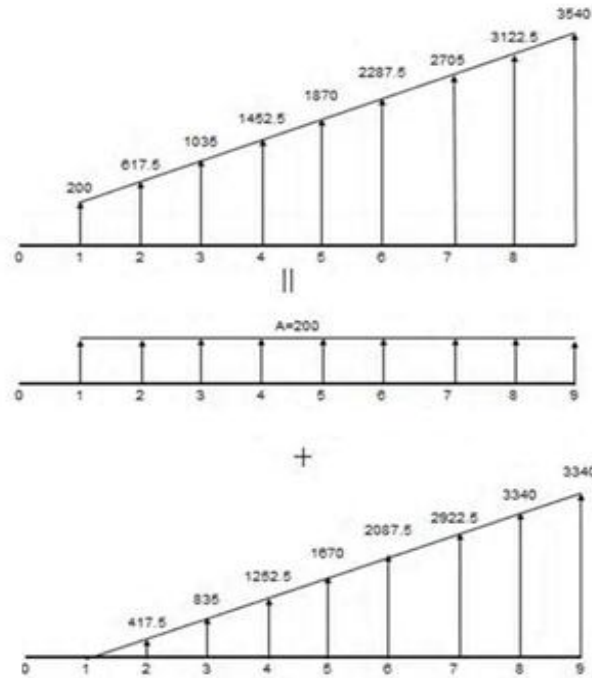


مثال ۲:



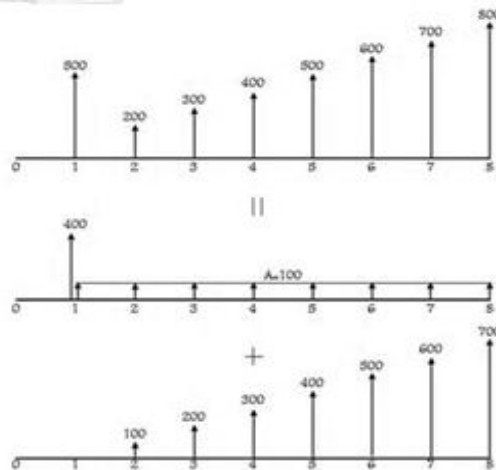
$$G = \frac{(3540 - 200)}{8} = 417.5$$

$$P_A = 200 \times \left( \frac{P}{A, \%15, 9} \right) = 954.32$$

$$P_G = 417.5 \times \left( \frac{P}{G, \%15, 9} \right) = 6160.2125$$

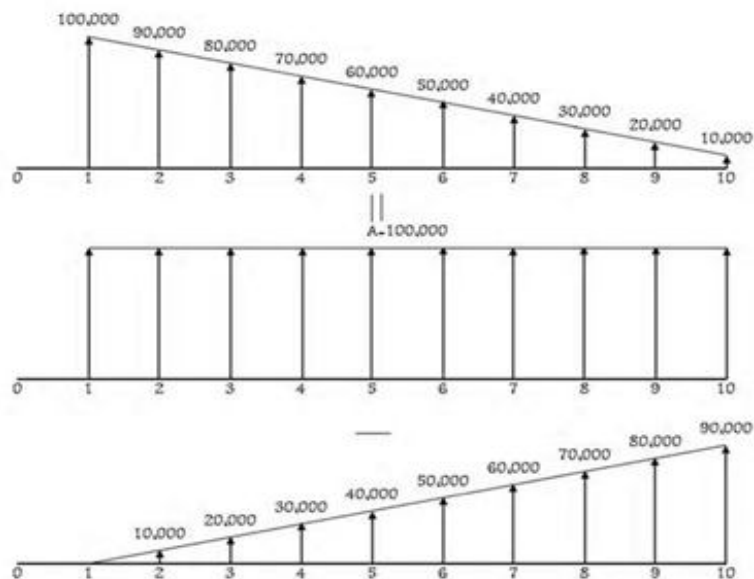
$$P = P_A + P_G = 7114.5325$$

مثال ۳:



$$P = 400 \left( \frac{P}{F, \%10, 1} \right) + 100 \left( \frac{P}{A, \%10, 8} \right) + 100 \left( \frac{P}{G, \%10, 8} \right) = 2499.93$$

مثال ۴:

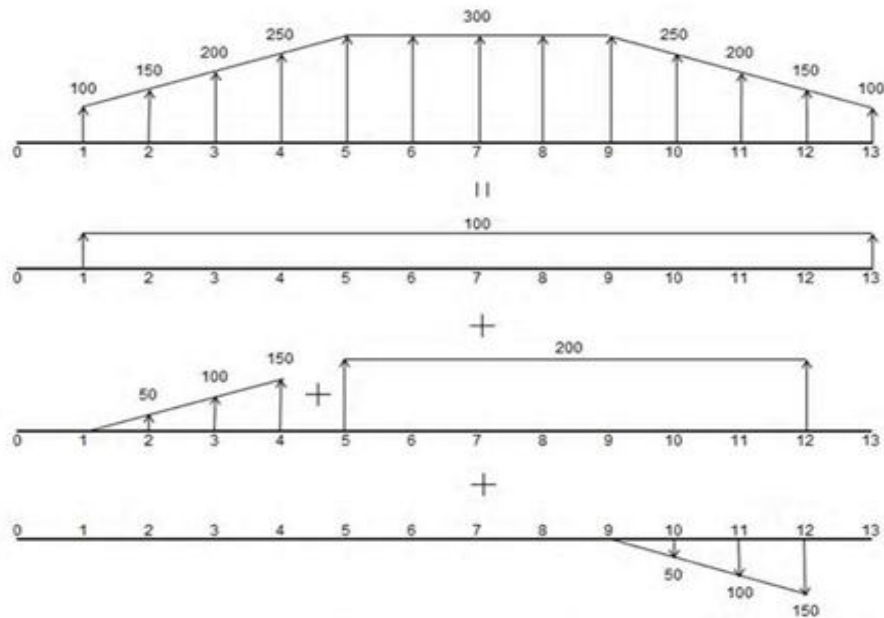


$$A_A = 100,000$$

$$A_G = 10,000 \times (A/G, \%10, 10) = 37,250$$

$$A = A_A - A_G = 100,000 - 37,250 = 62,750$$

مثال ۵:



$$P = 100(P/A, \%10, 13) + 50(P/G, \%10, 4) + 200(P/A, \%10, 8)(P/F, \%10, 4) - 50(P/G, \%10, 4)(P/F, \%10, 8) = 1555.86049$$

مثال ۹ :

پایان دوره	A	B	A - B
۰	-8000	-15000	7000
۱	6000	4000	2000
۲	5000	3000 + X	2000 - X
۳	4000	2000 + 2X	2000 - 2X
۴	5000	3000 + 3X	2000 - 3X
۵	6000	4000 + 4X	2000 - 4X
۶	5000	3000 + 5X	2000 - 5X

$$2000 + 7000 \left( \frac{0.24323}{A/P, \%12, 6} \right) - X \left( \frac{2.172}{A/G, \%12, 6} \right) = 0 \Rightarrow X = \frac{3702.61}{2.172} = 1704.7$$

مثال ۱۲

$$\begin{cases} A_t = 1.1A_{t-1} \\ i = \%20 \\ A_1 = 20000 \\ n = 20 \end{cases}$$

$$(1+j) = 1.1 \Rightarrow j = \%10$$

$$F = 20000 \times \left[ \frac{\left( \frac{38.3375}{F/P, \%20, 20} \right) - \left( \frac{6.7274}{F/P, \%10, 20} \right)}{0.2 - 0.1} \right] = 6322020$$

مثال ۱۳

$$\begin{cases} A_t = 0.9A_{t-1} \\ i = \%20 \\ A_1 = 100000 \\ n = 10 \end{cases}$$

$$(1+j) = 0.9 \Rightarrow j = -\%10$$

$$P = 100000 \times \left[ \frac{1 - \left( \frac{0.9}{1.2} \right)^{10}}{0.2 - (-0.1)} \right] = 314562.1618$$